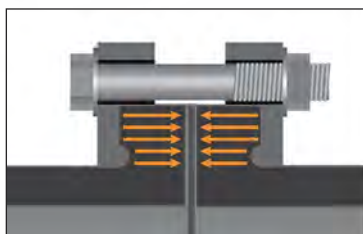
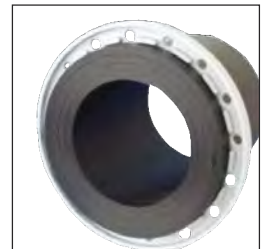


# HP High Pressure Flange Adaptor

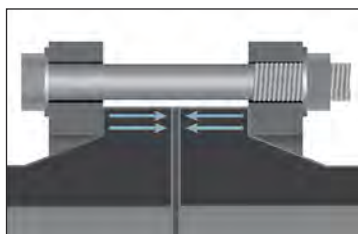
patented, for PN 10, PN 16 and PN 25 piping systems



- HP special flange adaptors offer high performance solutions for flange type pipe connections
- the design comprises a unique PE 100 flange adaptor and a loose flange-type backing ring ideally suited to each particular dimension forming a permanent leak-tight connection
- particularly secure connections due to patented and coordinated design of flange and adaptor
- full end-load taking performance up to 25 bar line pressure for all standard pipe dimensions
- the special PE adaptor and flange interlock positively at their connecting surfaces by means of a unique and well-proven tongue and groove principle
- all axial forces contained in the pipeline are transferred to the flange over the entire connecting surface
- this design prevents any deformation of the special PE adaptor – available in dimensions from DN 50 to DN 1200
- fully approved by DVGW for gas and water applications
- supplied with a EPDM O-ring, or optionally, with a EPDM flat profile gasket
- connections with HP special flange adaptors will **remain leak-tight and re-tightening is unnecessary**
- no thrust blocks are required
- **considerably reduced installation costs**



HP High Pressure Flange Adaptor



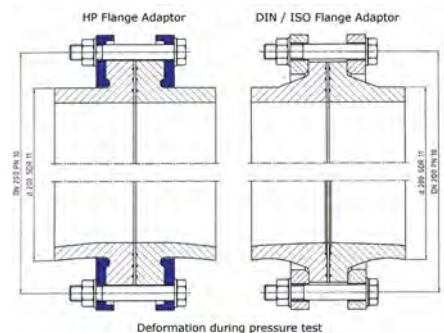
Standard Flange Adaptor

## HP flanges in comparison to conventional Flange Adaptors

When comparing the cross section of a HP flange with a standard flange connection it can be clearly seen that a conventional loose flange only transmits sealing forces to a relatively small area of adaptor end.

By contrast, the HP range makes full use of the maximum available surface area while at the same time totally encapsulating the adaptor end.

This unique design provides increased safety levels even at high operating pressures.

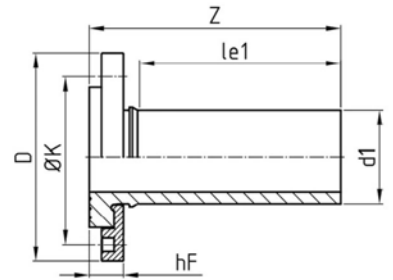


# HP High Pressure Flange Adaptor

patented, PN 10



Flange Type B



- pressure resistant flange connections in all standard pipe dimensions
- consisting of a special PE100 HP flange adaptor, is in accordance with DIN 16963
- particularly reliable due to patented design of flange and adaptor
- fully end-load-taking up to 10 bar line pressure
- improved long-term assurance against leaks as the connection provides a large sealing area
- with extended fusion spigot up to DN 225, long fusion spigot for electrofusion jointing above DN 250
- DVGW approved for gas and water applications up to DN 200, Register Number DV-4508 B00259
- flange optionally
  - Type A steel according to DIN EN 10310 plastic coated, or
  - Type B fully glass-fiber reinforced according to DIN EN 1092-1, stainless steel upon request
- supplied with a EPDM O-ring, alternatively with a EPDM flat profile gasket
- available in dimensions from DN 50 to DN 1200
- PN 10 working pressure rated
- connections with HP special flange adaptors will **remain leak-tight and re-tightening is unnecessary**
- thrust blocks are not required
- **considerably reduced installation costs**

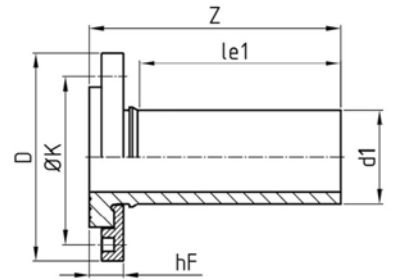
DN	d <sub>1</sub>	l <sub>e1</sub>	ØK	n x ØL	Bolts	D	Z			Flange Type A			Type B	
							SDR 17	SDR 11	SDR 17	hF	weight/kg		hF	kg
							SDR 17	SDR 11	SDR 17	SDR 11	SDR 17	SDR 11	SDR 17/11	SDR 11
50	63	123	125	4x18	M 16	165	160	160	28	28		2,2	36	0,6
65	75	130	145	8x18	M 16	185	170	170	29	29		2,5	37	0,9
80	90	141	160	8x18	M 16	200	180	180	29	29		3,1	40	1,2
100	110	160	180	8x18	M 16	220	200	200	31	31		3,8	43	1,6
100	125	173	180	8x18	M 16	220	220	220	38	38		3,9	51	1,9
125	140	195	210	8x18	M 16	250	240	240	40	40		5,3	53	2,6
150	160	210	240	8x22	M 20	285	260	260	42	42		7,2	57	3,7
150	180	215	240	8x22	M 20	285	270	270	47	47		7,2	63	4,1
200	200	232	295	8x22	M 20	340	290	290	50	50		12,5	65	6,1
200	225	250	295	8x22	M 20	340	310	310	50	50		11,3	65	6,6
250	250	200	350	12x22	M 20	395	260	270	45	55	14,4	16,3	72	9,1
250	280	200	350	12x22	M 20	395	260	270	45	55	13,2	15,4	72	9,4
300	315	200	400	12x22	M 20	445	270	280	45	55	17,6	20,3	77	12,4
350	355	200	460	16x22	M 20	505	270	280	51	61	25,2	29,5	86	18,2
400	400	300	515	16x26	M 24	565	380	390	57	70	36,7	43,4		
450	450	300	565	20x26	M 24	615	390	410	71	85	44,2	53,1		
500	450	300	620	20x26	M 24	670	400	410	73	87	57,3	66,7		
500	500	300	620	20x26	M 24	670	400	410	71	85	51,3	62,0		
600	560	300	725	20x30	M 27	780	410	420	86	96	91,0	105,0		
600	630	300	725	20x30	M 27	780	410	420	77	87	72,0	88,0		
700	710	500	840	24x30	M 27	895	610	630	81	101	123,0	153,0		
800	800	500	950	24x33	M 30	1015	615	655	87	115	171,0	214,0		
900	900	500	1050	28x33	M 30	1115	630	670	95	130	215,0	274,0		
1000	1000	500	1160	28x36	M 33	1230	650	690	112	152	283,0	358,0		
1200	1200	500	1380	32x39	M 36	1455	700	740	150	190	463,0	572,0		

# HP High Pressure Flange Adaptor

patented, PN 16



Flange Type A



- pressure resistant flange connections in all standard pipe dimensions
- consisting of a special PE100 HP flange adaptor, is in accordance with DIN 16963
- particularly reliable due to patented design of flange and adaptor
- fully end-load-taking up to 16 bar line pressure
- improved long-term assurance against leaks as the connection provides a large sealing area
- with extended fusion spigot up to DN 225, long fusion spigot for electrofusion jointing above DN 250
- DVGW approved for gas and water applications up to DN 200, Register Number DV-4508 B00259
- supplied with a EPDM O-ring, alternatively with a EPDM flat profile gasket
- available in dimensions from DN 50 to DN 1200
- PN 16 working pressure rated, PN 25 upon request
- connections with HP flange adaptors will **remain leak-tight and re-tightening is unnecessary**
- thrust blocks are not required
- **considerably reduced installation costs**

DN	d <sub>1</sub>	l <sub>e1</sub>	ØK	n x ØL	Bolts	hF		D	Z		weight/kg	
						SDR 17	SDR 11		SDR 17	SDR 11	SDR 17	SDR 11
50	63	123	125	4x18	M 16	27	27	165	160	160		2,2
65	75	130	145	8x18	M 16	29	29	185	170	170		2,5
80	90	141	160	8x18	M 16	29	29	200	180	180		3,1
100	110	160	180	8x18	M 16	31	31	220	200	200		3,8
100	125	173	180	8x18	M 16	38	38	220	220	220		3,9
125	140	195	210	8x18	M 16	38	38	250	240	240		5,3
150	160	210	240	8x22	M 20	42	42	285	260	260		7,2
150	180	215	240	8x22	M 20	47	47	285	270	270		7,2
200	200	230	295	12x22	M 20	50	50	340	290	290	10,0	11,3
200	225	250	295	12x22	M 20	50	50	340	310	310	9,6	11,1
250	250	200	355	12x26	M 24	46	56	405	260	270	15,5	17,5
250	280	200	355	12x26	M 24	46	56	405	260	270	14,1	16,4
300	315	200	410	12x26	M 24	48	58	460	270	280	20,2	23,2
350	355	200	470	16x26	M 24	55	65	520	270	280	27,8	32,0
400	400	300	525	16x30	M 27	61	74	580	390	400	40,3	47,3
450	450	300	585	20x30	M 27	76	90	640	395	410	52,1	61,5
500	450	300	650	20x33	M 30	78	92	715	395	410	76,0	86,0
500	500	300	650	20x33	M 30	78	92	715	395	410	70,0	82,0
600	560	300	770	20x36	M 33	88	98	840	410	420	114,0	129,0
600	630	300	770	20x36	M 33	88	98	840	420	430	100,0	118,0
700	710	500	840	24x36	M 33	97	17	910	630	650	138,0	170,0
800	800	500	950	24x39	M 36	99	122	1025	640	670	190,0	233,0
900	900	500	1050	28x39	M 36	107	142	1125	650	690	235,0	294,0
1000	1000	500	1170	28x42	M 39	123	153	1255	660	700	335,0	412,0
1200	1200	500	1390	32x48	M 45	160	200	1485	710	760	565,0	674,0