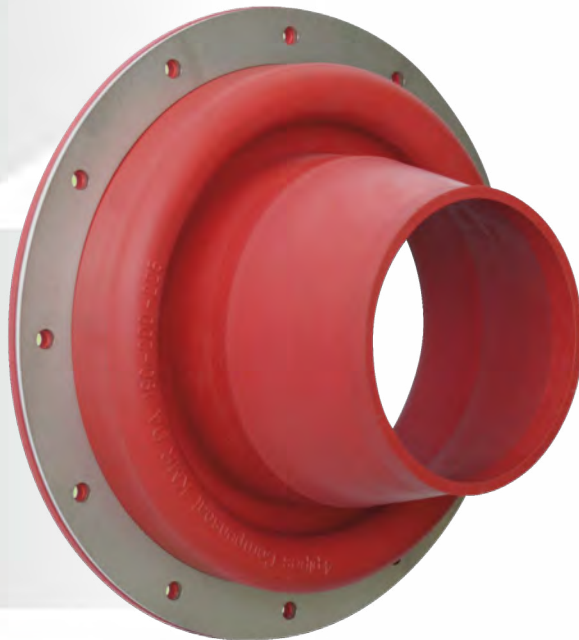


Compensating Wall Penetration Seal Type WGKK for retrofit dowelling



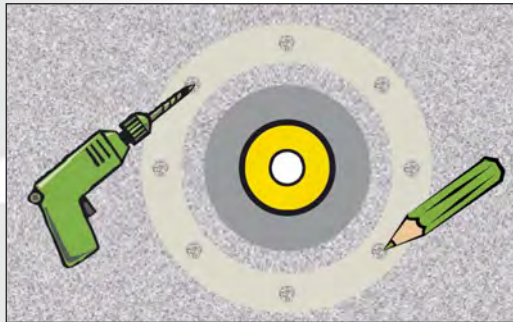
- EPDM seal for accommodating large radial and axial pipe movements up to ± 40 mm depending on pipe OD and core drill hole
- for district heating (**pre-insulated**) pipelines, cables, gas and water utility services
- OD 75 to OD 800 mm and 150 - 900 mm core drill hole 1000, 1100, 1200 and 1300 mm on request
- gas and water tight, leak proof against pressing water up to 1,0 bar, MFPA approved with load cycles between wall and carrier pipe
- thickness $8 \text{ mm} \pm 1 \text{ mm}$,
- shore hardness A $60^\circ \pm 5$
- elongation at break 400%
- temperature resistance max. 120°C
- all metal parts in stainless steel 1.4301
- seal supplied with complete set of stainless steel bands with fasteners, screws 12 mm, dowels 14 mm and PU-Sealant

pipe OD mm	core drill hole mm	wall flange OD mm
75 - 90 - 110	150 / 200	350
125 - 140 - 160	200 / 250	400
180 - 200 - 225	300	450
250 - 280 - 315	350 / 400	565
355 - 400	450 / 500	650
450 - 500	550 / 600	750
560 - 630	650 / 700	880
670	800 max.	950
710 - 800	800 / 900	1050
900	1000	1100 / 1200
1000	1100	1200 / 1300
1100	1200	1300 / 1400
1200	1300	1300 / 1500

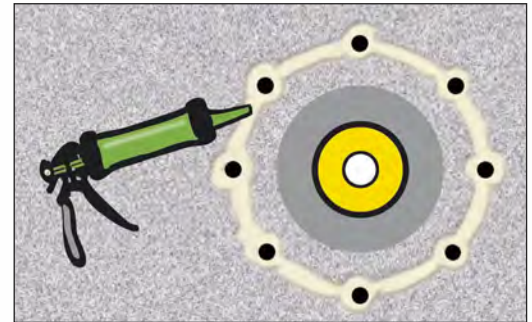


> 300 with hinge bolt tightening stainless steel bands with TOX Weld Point Freecorrosion joining technology

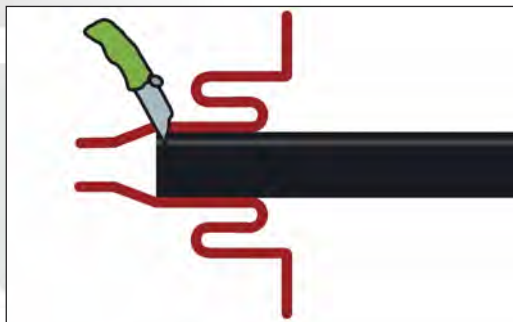
Compensating Wall Penetration Wall Seal Typ WGKK Application



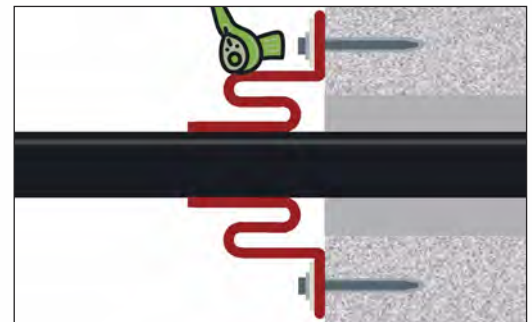
1. Centre and support the carrier pipe in core drilled hole.
2. Apply pressure plate centered to core drilled hole and mark bore holes and after that drill into marks and insert dowels.



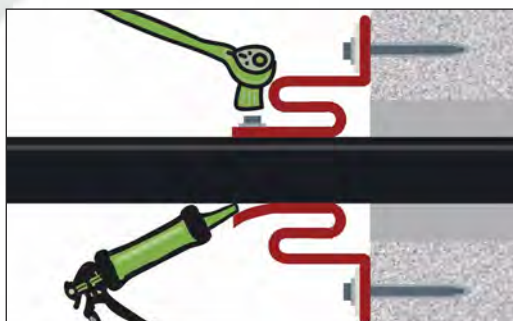
3. Apply sealing compound with a cartridge caulking gun on the wall circular around every screw drilled hole as well as the complete core bore hole range.



4. If necessary cut down the seal nozzle to the correct pipe dimension, pull the WGKK Seal over the casing pipes and cut off the seal with a sharp knife along the edge.
(The edges in the nozzle are not the cutting marks.)



5. Push the side of the WGKK Seal with flange bore-holes first over the carrier pipe up to the wall. After that interlock the WGKK Seal with the pressure plate and inject emergent sealing compound.

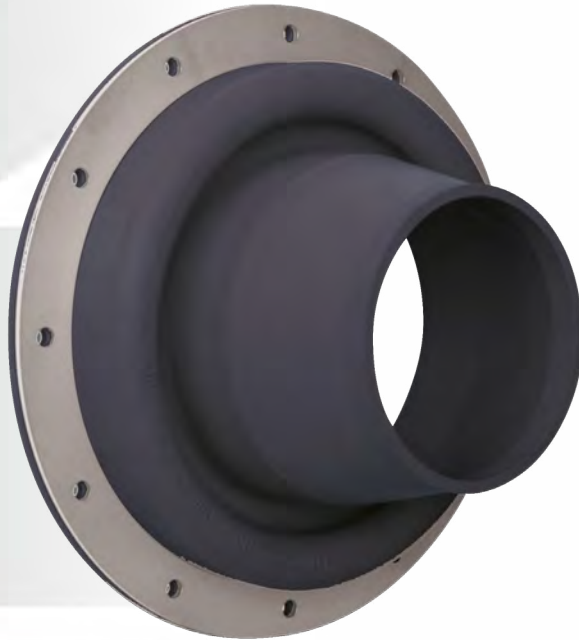


6. Adjust opening of the collar to the carrier pipe so that a wave shaped expansion zone occurs. Inject sealing compound circularly into the collar opening and fasten the stainless steel straps closely.

Remarks

- make sure that the carrier pipe, the wall and the WGKK Seal during the application are dry as well as free of grease and dust
- when laid into the ground the WGKK Seal must be covered before backfilling with an expansion cushion (e.g. sand bed) to ensure that the seal can move in all directions
- for tighten the 19 mm stainless steel straps on pipes of OD 355 mm and larger it is recommended to use a tightening tool

Compensating Wall Penetration Wall Seal Type WGKK for retrofit dowelling



- **NBR** rubber, black, seal for accommodating large radial and axial pipe movements up to ± 40 mm depending on pipe OD and core drill hole
- non UV light and weather resistant
- for district heating (pre-insulated) pipelines, cables, gas and water utility services
- OD 75 to OD 800 mm, dimensions 1000, 1100, 1200, 1300 mm on request
- gas and water tight, leak proof against pressing water up to 0,5 bar
- MFPA approved with load cycles between wall and carrier pipe
- thickness 8 mm \pm 1 mm,
- shore hardness 53° \pm 5
- elongation at break 300%
- temperature resistance max. 70°C
- all metal parts in stainless steel 1.4301
- supplied as complete set of stainless steel band with lock, 12 mm stainless steel hexagon head screws, 14 mm dowels and PU-Sealant

pipe OD mm	core drill hole mm	wall flange OD mm
75 - 90 - 110	150 / 200	150
125 - 140 - 160	200 / 250	400
180 - 200 - 225	300	450
250 - 280 - 315	350 / 400	565
355 - 400	450 / 500	650
450 - 500	550 / 600	750
560 - 630	650 / 700	880
670	800 max.	1050
710 - 800	800 / 900	1050
900	1000	1100 / 1200
1000	1000	1200 / 1300
1100	1200	1300 / 1400
1200	1300	1300 / 1500



≤ 300 with hinge bolt tightening stainless steel bands with TOX Weld Point Freecorrosion joining technology