

FROST Leak Detection Spray

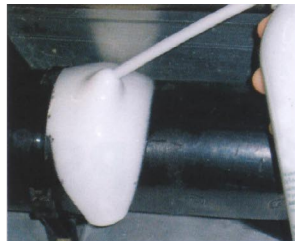
„FROST“ leak detection spray foam locates all piping leakages.

Especially suited for use on polyethylene and similar plastic and other piping systems.

It checks the jointing on all associated welded and threaded connections to fittings and valves, pressurised vessels and containers used for example in gas and potable water distribution systems, industrial piping layouts as well as many other applications.



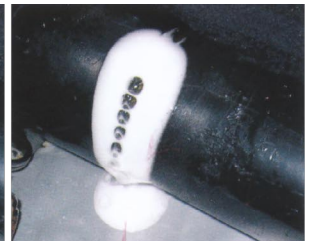
Apply foam to the area to be tested using the applicator.



In hard-to-reach areas distribute the foam evenly by hand.



After a few seconds black bubbles appear on white foam.



The foam at the leak is visible for a few minutes.

- FROST spray foam provides an easy leak detection by forming a distinct formation of dark bubbles within a white foam spray around the joint under examination
- suitable for all kinds of gases and compressed air appliances within a temperature range from -15°C up to $+70^{\circ}\text{C}$
- even in badly illuminated areas the FROST foam formation will clearly indicate where leak detection is and has been carried out
- the cold stability of FROST foam is in accordance with ASTM D 1177-94
- the applicator supplied enables precise and economical application of the foam therefore making all leak detection quick and simple
- FROST foam flows more slowly than any conventional leak detection agent. It remains exactly in place over long periods of time permitting a simultaneous check of many different connections all at the same time.
- FROST foam is non-combustible, non-corrosive and non-toxic. It does not damage or cause stress corrosion cracking on any type of plastic piping system and is fully in accordance with ASTM D 1693 and has DVGW approval NG-5170 BO 0386 DIN EN 14291.
- each aerosol can contains 400ml and is supplied in boxes of 15 cans