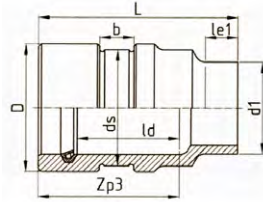


Push-Fit and Expansion Sockets fix point type, PE-100 / PP-r



- EPDM lip seal ring Type 3S with KTW recommendation for drinking water
- optional: NBR lip seal, without clamp

Attention
clamp may not exert a radial force on the fitting

SDR 17/17,6

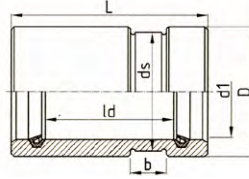
d1	le1	zp3	ds	b	Clamp	ld	D	L	KG
63	30	180	78	45	75x40*	135	90	230	0,5
75	30	185	93	45	90x40*	140	107	235	0,7
90	30	188	114	45	110x40*	140	125	245	1,0
110	30	190	129	45	125x40*	145	150	250	1,1
125	30	195	144	45	140x40*	145	165	255	1,4
140	30	195	164	45	160x40*	145	185	255	1,9
160	30	195	184	55	180x50*	145	205	255	2,1
180	30	195	205	55	200x50*	145	230	260	2,7
200	40	210	230	55	225x50*	155	250	280	3,4
225	40	235	256	55	250x50*	180	280	310	4,3
250	40	235	286	55	280x50*	180	315	310	5,8
280	40	280	321	65	315x60*	180	345	320	7,1
315	40	260	362	65	355x60*	195	388	340	9,4
355	40	265	408	65	400x60*	195	430	350	11,9
400	40	280	455	75	457x70**	205	485	380	16,2
450	40	295	515	75	521x70**	220	545	390	19,3
500	40	305	575	75	***	230	610	400	26,2
560	40	320	640	75	***	240	680	430	31,9
630	40	350	720	75	***	260	755	455	44,6

SDR 11

d1	le1	zp3	ds	b	Clamp	ld	D	L	KG
63	30	180	78	45	75x40*	135	92	230	0,5
75	30	185	93	45	90x40*	140	109	235	0,7
90	30	188	114	45	110x40*	140	130	245	1,0
110	30	190	144	45	140x40*	145	155	250	1,8
125	30	195	164	45	160x40*	145	175	255	2,3
140	30	195	184	55	180x50*	145	190	260	3,0
160	30	195	205	55	200x50*	145	215	270	3,7
180	30	195	230	55	225x50*	145	240	275	4,7
200	40	210	256	55	250x50*	155	265	290	5,8
225	40	235	286	55	280x50*	180	300	320	8,3
250	40	235	321	65	315x60*	180	330	330	10,7
280	40	240	362	65	355x60*	180	370	340	14,0
315	40	260	390	75	407x70**	195	410	355	15,3
355	40	265	440	75	457x70**	195	470	370	21,1
400	40	280	500	75	521x70**	205	525	390	27,8
450	40	295	555	75	559x70**	220	585	410	34,0
500	40	305	620	75	620x70**	230	645	425	45,6
560	40	320	690	75	***	240	720	450	56,4
630	40	350	780	75	***	260	805	490	78,2

* steel clamp **DIN 3567 *** special clamp other sizes on request

Push-Fit Double Socket fix point type, PE-100 / PP-r



- EPDM lip seal ring Type 3S with KTW recommendation for drinking water
- standard type without stop inside and without clamp
- optional:
with stop inside,
with NBR lip seal

Attention

clamp may not exert a radial force on the fitting

SDR 17/17,6

d1	ds	b	Clamp	id	D	L	KG
110	129	45	125 x 40*	240	145	360	2,3
125	144	45	140 x 40*	240	165	360	2,9
140	164	45	160 x 40*	240	185	360	3,7
160	184	55	180 x 40*	260	205	380	4,3
180	205	55	200 x 50*	260	230	390	5,5
200	230	55	225 x 50*	270	250	400	6,3
225	256	55	250 x 50*	290	280	420	8,2
250	286	55	280 x 50*	290	315	430	11,1
280	321	65	315 x 60*	300	345	450	12,9
315	362	65	355 x 60*	320	385	470	16,4
355	408	65	400 x 60*	350	430	500	21,2
400	455	75	457 x 70**	370	485	530	28,3
450	515	75	521 x 70**	400	535	560	34,0
500	575	75	***	400	595	560	42,3
560	640	75	***	470	606	640	57,0
630	720	75	***	510	745	680	78,5

SDR 11

d1	ds	b	Clamp	id	D	L	KG
110	144	45	140x40*	240	155	360	3,1
125	164	45	160x40*	240	175	360	3,9
140	184	55	180x50*	240	200	360	5,2
160	205	55	200x50*	260	225	380	6,8
180	230	55	225x50*	260	250	390	8,4
200	256	55	250x50*	270	270	400	9,6
225	286	55	280x50*	290	310	420	13,7
250	321	65	315x50*	290	340	430	16,5
280	362	65	355x60*	300	380	450	21,6
315	390	75	407x70**	320	410	470	23,4
355	440	75	457x70**	350	460	500	31,0
400	500	75	521x70**	370	520	530	42,7
450	555	75	559x70**	400	575	560	52,5
500	620	75	620x70**	400	640	560	65,6
560	690	75	***	470	710	640	89,8
630	780	75	***	510	800	680	122,1

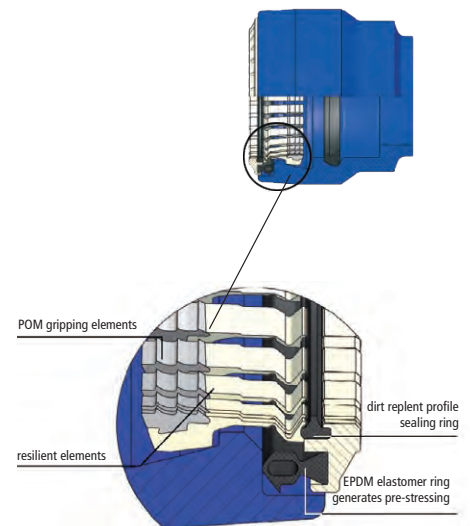
* steel clamp **DIN 3567 *** special clamp other sizes on request

Push-Fit Double Socket, PN16
PE-100, patented



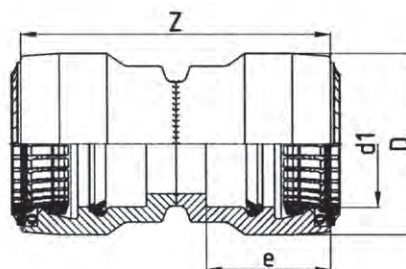
- PE-100 **pull-out resistant** double Push-Fit Coupling for PE water pipes up to 16 bar, with POM Grip-Rings
- d 90 - d 225, SDR 17/11
- body PE-100 RC*
- EPDM elastomer ring generates pre-stressing
- resistant to longitudinal forces due to resilient Grip element
- EPDM lip seal ring Type 3S with KTW recommendation for drinking water
- dirt repellent profile ring
- DVGW approved for drinking water, Reg.No. DW-8616BU0210

* RC = crack resistant

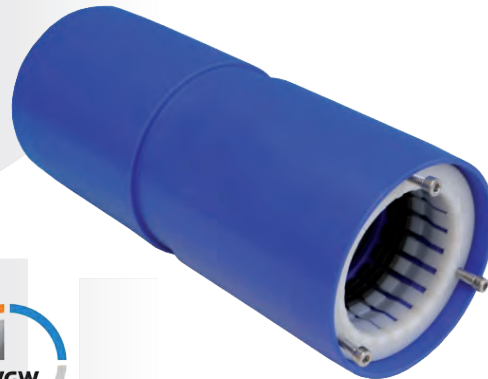


SDR 11

DN	d1	zp1	D	L	KG
80	90	140	152	350	2,4
100	110	145	175	360	3,3
100	125	148	190	360	3,9
150	160	163	234	400	6,5
150	180	185	260	460	7,7
200	200	213	285	515	
200	225	216	315	525	14,3



Push-Fit Repair Coupling
for PE-100 pipes up to 16 bar
patented

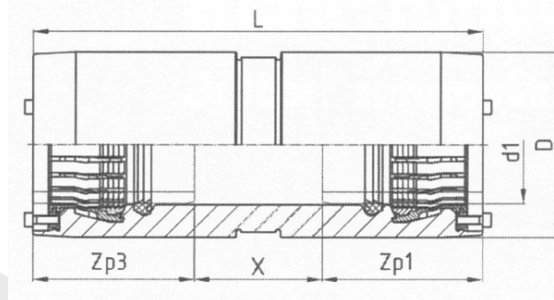
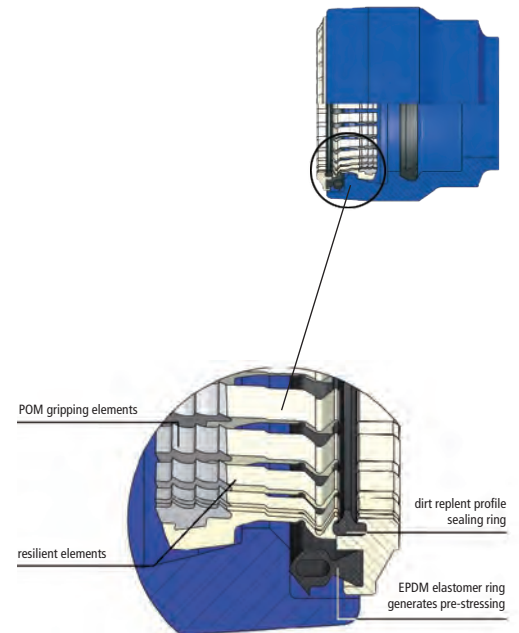


- **pull-out resistant** Push-Fit Coupling for repairs in PE-100 water pipe systems up to 16 bar
- d 90 - d 225, SDR 11
- body PE - 100 RC*
- EPDM lip seal ring Type 3S with KTW recommendation for drinking water
- 3 Stainless Steel screws at the front for safe pre-stressing and restraining the POM Grip Ring
- resistant to longitudinal forces due to resilient POM Grip Ring
- DVGW Reg. No. DW86L6B00310 / drinking water

* RC = crack resistant

SDR 11

d1	zp1	zp3	x	D	L
90	150	150	117 ±	152	422
110	152	152	117 ±	175	425
125	156	156	118 ±	190	435
160	164	164	120 ±	234	452
180	194	194	145 ±	260	538
200	198	198	145 ±	285	546
225	203	203	145 ±	315	556



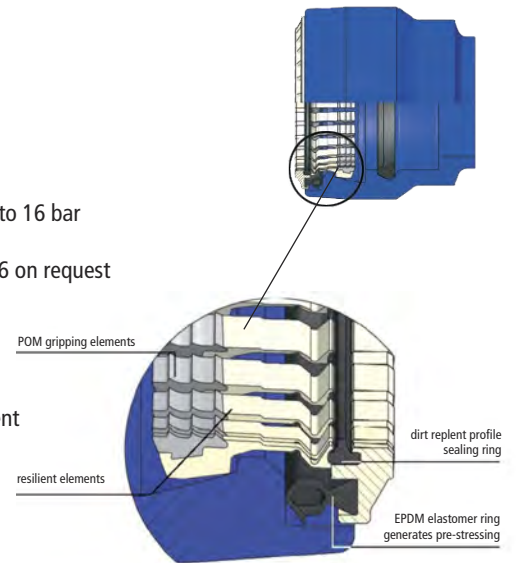
- zp1, zp3 = insertion depth / min
- tolerance X ± 5 mm

Push-Fit Coupling with Flange, PE-100 patented



- PE-100 **pull-out resistant** Push-Fit Coupling with RILSAN coated HP Flange DIN EN 1092-1, PN10 for connection, repair and transition of PE-100 water pipes up to 16 bar (for gas pipes on request)
- d 90 - d 225, DN80 to DN150 / PN10 & 16, DN200 PN10, PN16 on request
- body PE-100 RC*
- with POM Grip - Ring
- EPDM lip seal ring Type 3S with KTW recommendation for drinking water
- resistant to longitudinal forces due to resilient POM Grip Element
- dirt repellent profile ring
- DVGW approved for drinking water, Reg.-No. DW-8616BU0210, DV-4508B00259

* RC = crack resistant



SDR 11, PN16

DN	d1	zp1	øK	n x øL	Bolts	hF	D	L	KG
80	90	140	160	8x18	M16	29	152	240	4,4
100	110	170	180	8x18	M16	31	175	275	5,8
100	125	172	180	8x18	M16	38	190	280	6,5
150	160	183	240	8x22	M20	42	234	275	12,1
150	180	211	240	8x22	M20	47	260	297	13,4
200	200	231	295	8x22	M20	50	285	355	14,5
200	225	236	295	8x22	M20	50	315	360	22,5

