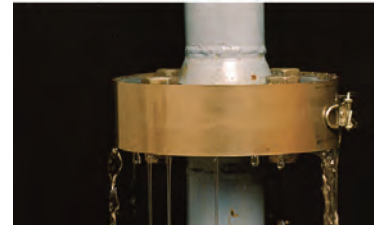


Spray Prevention clamp, stainless steel System BETEK

Spray Prevention Stainless Steel Clamp (patented)

- made of Stainless Steel DIN 1.4404/ ASTM 316
- universal application
- guarantees safety regardless of flange type and size
- available in all sizes and for all presently known types of DIN/ISO/ANSI flanges, DN10 - DN1000 and ½" - 24"
- can be used on every flange configuration, round, oval or other shapes also with different or no gap between the flanges
- equipped with a special Stainless Steel net which adapts itself to the gap between the flanges; the Spray Prevention Clamps also fit to flanges deviating from any standard
- safe locking
- no tools required
- perfectly adjustable
- re-useable
- good steam protection
- resistant against
 - weather influence
 - UV-radiation
 - temperatures up to +400°C
 - pressure up to 100 bar
 - toxic, hot or cold media
- in case of failure the special Stainless Steel filter net inside the ring absorbs the media and distributes it around the flange circumference and thereby reducing the pressure in a few seconds



round flanges



oval flanges



square flanges

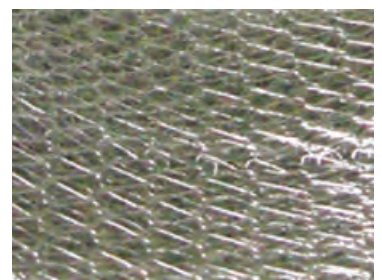
Technical Data

Outside ring:	0,5 mm Stainless Steel
Sizes (widths):	50 mm for < 25 mm gap 70 mm for < 45 mm gap 90 mm for < 65 mm gap
Net:	5 mm Stainless Steel
Clasp:	fast locking, adjustable

Material Specification

Outside ring:	Stainless Steel DIN 1.4404 / ASTM 316
Clasp:	Stainless Steel DIN 1.4404 (or equivalent, subject to availability)

Stainless Steel filter net



Spray Prevention Stainless Steel Clamp

DIN Standard

DIN 2631 PN 6	DIN 2632 PN 10	DIN 2633 PN 16	DIN 2634 PN 25	DIN 2635 PN 40	DIN 2636 PN 64	DIN 2637 PN 100	maximum gap between both flanges			flange diameter	flange perimeter
							25 mm	45 mm	65 mm		
							order-code in ring-width			50 mm	70mm
							2-0075-50	#	#	75	236
							2-0080-50	#	#	80	251
	10	10	10	10			2-0090-50	#	#	90	283
	15	15	15	15			2-0095-50	#	#	95	298
					10	10	2-0100-50	#	#	100	314
	20	20	20	20	15	15	2-0105-50	#	#	105	330
	25	25	25	25			2-0115-50	#	#	115	361
32							2-0120-50	#	#	120	377
40							2-0130-50	#	#	130	408
50	32	32	32	32	25	25	2-0140-50	#	#	140	440
	40	40	40	40			2-0150-50	#	#	150	471
65							2-0160-50	#	#	160	502
	50	50	50	50			2-0165-50	#	#	165	518
					40	40	2-0170-50	#	#	170	534
					50		2-0180-50	#	#	180	565
	65	65	65	65			2-0185-50	#	#	185	581
							2-0190-50	#	#	190	597
80						50	2-0195-50	#	#	195	612
	80	80	80	80			2-0200-50	#	#	200	628
					65		2-0205-50	#	#	205	644
100							2-0210-50	#	#	210	659
					80		2-0215-50	#	#	215	675
	100	100				65	2-0220-50	#	#	220	691
						80	2-0230-50	#	#	230	722
			100	100			2-0235-50	#	#	235	738
125							2-0240-50	#	#	240	754
	125	125			100		2-0250-50	#	#	250	785
150						100	2-0265-50	#	#	265	832
			125	125			2-0270-50	#	#	270	848
	150	150					2-0285-50	#	#	285	895
					125		2-0295-50	#	#	295	926
			150	150			2-0300-50	#	#	300	942
						125	2-0315-50	#	#	315	989
200							2-0320-50	#	#	320	1.005
	200	200					2-0340-50	#	#	340	1.068
					150		2-0345-50	#	#	345	1.083
						150	2-0355-50	#	#	355	1.115
			200				2-0360-50	#	#	360	1.130
				200			2-0375-50	#	#	375	1.178
250							2-0395-50	#	#	395	1.240
	250						2-0405-50	#	#	405	1.272
		250			200		2-0415-50	#	#	415	1.303
			250				2-0425-50	#	#	425	1.335
						200	2-0430-50	#	#	430	1.350
			300				2-0485-50	#	#	485	1.523
350							2-0490-50	#	#	490	1.539
	350					250	2-0505-50	#	#	505	1.586
			300				2-0515-50	#	#	515	1.617
		350					2-0520-50	#	#	520	1.633
					300		2-0530-50	#	#	530	1.664
400							2-0540-50	#	#	540	1.696
			350				2-0555-50	#	#	555	1.743
	400						2-0565-50	#	#	565	1.774
		400					2-0580-50	#	#	580	1.821
			350				2-0585-50	#	#	585	1.837
					350		2-0600-50	#	#	600	1.884
			400				2-0620-50	#	#	620	1.947
500							2-0645-50	#	#	645	2.025
						350	2-0655-50	#	#	655	2.057
			400				2-0660-50	#	#	660	2.072
	500				400		2-0670-50	#	#	670	2.104
		500					2-0715-50	#	#	715	2.245
			500				2-0730-50	#	#	730	2.292
600					500		2-0755-50	#	#	755	2.371
	600						2-0780-50	#	#	780	2.449
		600					2-0840-50	#	#	840	2.638
			600				2-0845-50	#	#	845	2.653
700							2-0860-50	#	#	860	2.700
	700						2-0895-50	#	#	895	2.810
		700					2-0910-50	#	#	910	2.857
			700				2-0960-50	#	#	960	3.014
800							2-0975-50	#	#	975	3.062
	800						2-1015-50	#	#	1.015	3.187
		800					2-1025-50	#	#	1.025	3.219
900							2-1075-50	#	#	1.075	3.376
			800				2-1085-50	#	#	1.085	3.407
	900						2-1115-50	#	#	1.115	3.501
		900					2-1125-50	#	#	1.125	3.533
1000							2-1175-50	#	#	1.175	3.690
			900				2-1185-50	#	#	1.185	3.721
	1000						2-1230-50	#	#	1.230	3.862
		1000					2-1255-50	#	#	1.255	3.941
			1000				2-1320-50	#	#	1.320	4.145

Spray Prevention Stainless Steel Clamp

ANSI Standard

150 lbs	300 lbs	400 lbs	600 lbs	order-code in width 50 mm	flange-diameter		flange-perimeter	
					mm	inch	mm	inch
1/2"				2-0090-50	89	3 1/2	279	11
	1/2"	1/2"	1/2"	2-0095-50	95	3 3/4	298	11 3/4
3/4"				2-0095-50	99	3 7/8	311	12 1/4
1"				2-0105-50	108	4 1/4	339	13 3/8
1-1/4"	3/4"	3/4"	3/4"	2-0115-50	117	4 5/8	367	14 1/2
	1"	1"	1"	2-0120-50	124	4 7/8	389	15 3/8
1-1/2"				2-0130-50	127	5	399	15 6/8
	1-1/4"	1-1/4"	1-1/4"	2-0130-50	133	5 1/4	418	16 1/2
2"				2-0150-50	152	6	477	18 3/4
	1-1/2"	1-1/2"	1-1/2"	2-0150-50	155	6 1/8	487	19 1/8
	2"	2"	2"	2-0165-50	165	6 1/2	518	20 3/8
2-1/2"				2-0180-50	178	7	559	22
3"	2-1/2"	2-1/2"	2-1/2"	2-0190-50	191	7 1/2	600	23 1/2
	3"	3"	3"	2-0210-50	210	8 1/4	659	26
3-1/2"				2-0215-50	216	8 1/2	678	26 3/4
4"	3-1/2"	3-1/2"	3-1/2"	2-0230-50	229	9	719	28 1/4
5"	4"	4"		2-0250-50	254	10	798	31 3/8
			4"	2-0270-50	273	10 3/4	857	33 3/4
6"	5"	5"		2-0285-50	280	11	879	34 5/8
	6"	6"		2-0315-50	318	12 1/2	999	39 1/4
			5"	2-0330-50	330	13	1.036	40 3/4
8"				2-0340-50	343	13 1/2	1.077	42 3/8
			6"	2-0355-50	356	14	1.118	44
	8"	8"		2-0375-50	381	15	1.196	47 1/8
10"				2-0405-50	406	16	1.275	50 1/4
			8"	2-0425-50	419	16 1/2	1.316	51 3/4
	10"	10"		2-0445-50	445	17 1/2	1.397	55
12"				2-0485-50	483	19	1.517	59 3/4
			10"	2-0505-50	508	20	1.595	62 3/4
	12"	12"		2-0520-50	521	20 1/2	1.636	64 3/8
14"				2-0530-50	533	21	1.674	65 7/8
			12"	2-0555-50	559	22	1.755	69 1/8
	14"	14"		2-0585-50	584	23	1.834	72 1/4
16"				2-0600-50	597	23 1/2	1.875	73 7/8
			14"	2-0600-50	603	23 3/4	1.893	74 1/2
18"				2-0635-50	635	25	1.994	78 1/2
	16"	16"		2-0645-50	648	25 1/2	2.035	80 1/8
			16"	2-0685-50	686	27	2.154	84 3/4
20"				2-0700-50	699	27 1/2	2.195	86 3/8
	18"	18"		2-0715-50	711	28	2.233	87 7/8
			18"	2-0745-50	743	29 1/4	2.333	91 7/8
	20"	20"		2-0780-50	775	30 1/2	2.434	95 3/4
24"				2-0815-50	813	32	2.553	100 2/4
	24"	24"		2-0910-50	914	36	2.870	113
			24"	2-0940-50	940	37	2.952	116 1/4