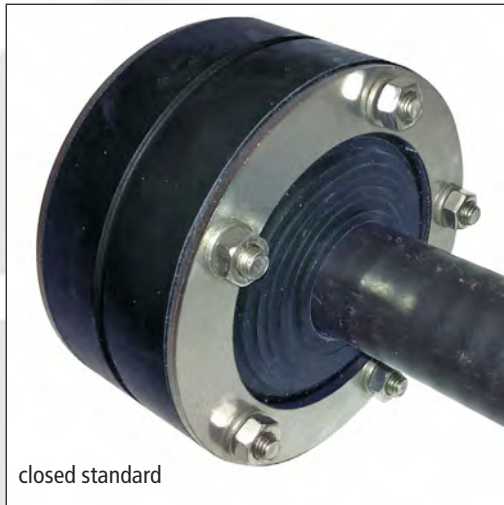


# Universal Wall Penetration Seal Onion Type



closed standard



split snap-in-closure

- with soft EPDM rubber from OD 20 to OD 160 mm especially suitable for plastic pipes
- laminar membrane technique with a wide range of applications
- used for single lead-through or as a blind seal for water pressures up to 1,5 bar
- double sealing
- the sealing design uses rubber membranes and is suitable for a large range of ducting pipes or cable sizes ranging from OD 20 to OD 160 mm
- 3 types of "Onion Type" seals from OD 18 to 65 mm, OD 60,3 to 110 mm and OD 110 to 160 mm covering 80% of the common pipe sizes, considerably reducing stock keeping levels
- split version easily foldable with snap-in arrest function

## Application guide

- count number of membranes to be removed in accordance with the outer diameter of the pipe or cable
- the membrane must be either compressed by hand or by using a suitable tool from behind before cutting off
- cut the surplus skin from the membrane
- the membrane can be removed by hand



Universal Wall Penetration Seal  
„Onion Type“ with extended  
flange on request

	split Universal DN 100	Universal DN 100	Universal DN 150	Universal DN 200
Material pressure plate	V2A split	stainless steel, closed	stainless steel, closed	
Pressure rating as blind closure	1,5 bar	1,5 bar	against non-pressing water	
Pressure rating with medium pipe	1,5 bar	1,5 bar	1,0 bar	
Rubber thickness*	40 mm	40 mm	40 mm	
Rubber quality	EPDM	EPDM	EPDM	
Temperature	-30°C up to +120°C	-30°C up to +120°C	-30°C up to +120°C	
Rubber grade, Shore A	45° ± 5°	45° ± 5°	45 ± 5	
For medium pipe OD	20, 25, 32, 40, 50, 63 mm	18 - 65 mm in 5 mm steps per ring	32, 40, 50 mm 60,3 - 63 mm 75 - 76,1 mm 88,9 - 90 mm, 110 mm	110 mm, 125mm, 139,7 - 140 mm 160 mm
Core bore hole	100 mm	100 mm	150 mm	200 mm
Artikel-No.	10499	10490	10495	10493

\* Tolerance ± 1 mm

The mentioned values refer to a pressure tightness rating at an operating temperature of 23°C. If the temperature is different, especially higher, a holding fixture has to be mounted.