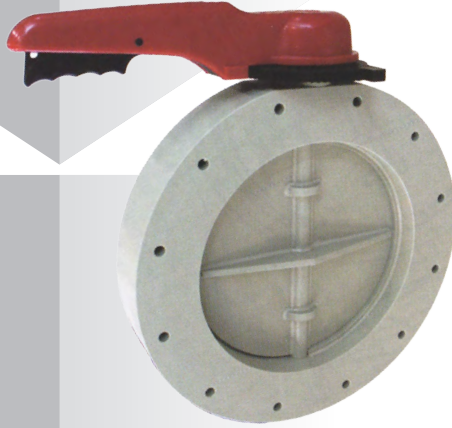
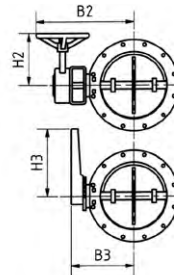


Butterfly Throttle Valves DN 50 - DN 350

KONEX
INTERNATIONAL

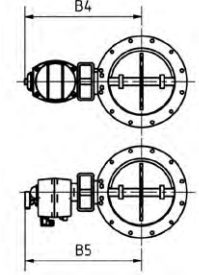


with reduction gear
with hand wheel



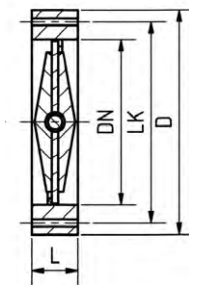
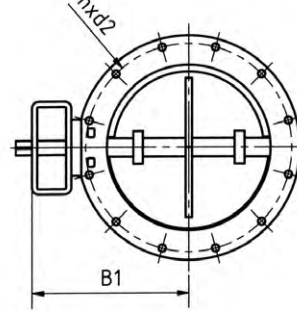
with hand lever

with pneumatic actuator
"double acting"



with electric actuator

with free shaft end



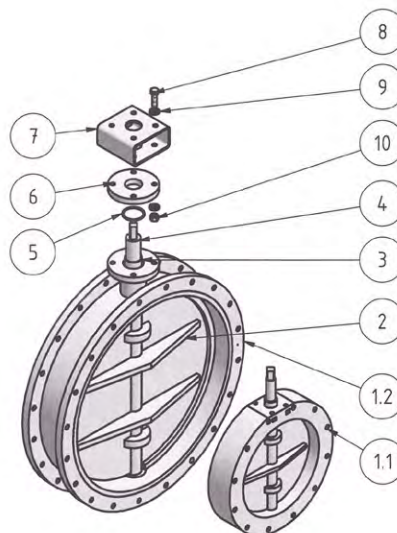
Operating pressure 0.1 bar over- or underpressure

ANSI, JIS DIN 2501/ EN1092-1/ PN10

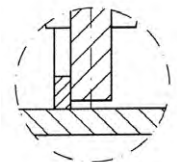
diameter*			dimensions*										
d	DN	inch	L	B1	B2	H2	B3	H3	B4	B5	LK	D	n x d2
63	50	2"	50	180	295	135	170	210	266	328	110	140	6 x 11
75	65	2½"	50	190	305	135	180	210	276	338	130	160	6 x 11
90	80	3"	50	210	325	135	200	210	296	358	150	190	6 x 11
110	100	4"	50	220	335	135	210	210	306	368	165	210	8 x 11
160	150	6"	60	240	355	135	230	210	326	409	215	250	10 x 11
225	200	8"	70	260	375	135	250	210	346	429	265	290	12 x 11
280	250	10"	70	280	395	135	270	210	385	476	315	340	12 x 11
315	300	12"	80	300	415	135	300	300	405	496	355	380	16 x 11
355	350	14"	90	330	445	135	330	300	435	526	405	430	20 x 11

*mm / inch

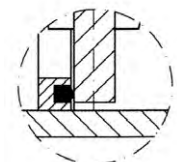
No.	description	material
1.1	body DN50-350	PVC, PP, PVDF
1.2	body DN400-2000	PVC, PP, PVDF, PVC-GRP, PP-GRP
2	disc, reinforced	PVC, PP, PE, PVDF
3	pipe support	PVC, PP, PE, PVDF
4	shaft	Stainless Steel 1.4301
5	O-ring	EPDM, FPM, PTFE
6	cover	PVC, PP, PVDF
7	Intermediate Plate	galvanised Stainless Steel 1.4301
8	screw	Stainless Steel 1.4301
9	washer	Stainless Steel 1.4301
10	nut	Stainless Steel 1.4571



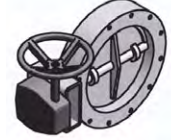
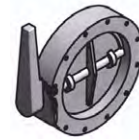
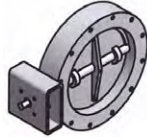
stop bar, tightness 99,5 Vol%
factory standard



lip seal gasket, tightness 99,9 Vol%
DIN 1946-4



Butterfly Throttle Valve, PP DN 50 - DN 350

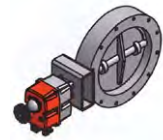


PP / EPDM or FPM

d	diameter*			free shaft end		hand lever with ratched settings		reduction gear with hand wheel	
	DN	inch	PN	No	KG	No	KG	No	KG
63	50	2"	0,1	480360	0,80	480369	1,80	480378	7,80
75	65	2½"	0,1	480361	1,00	480370	2,00	480379	8,80
90	80	3"	0,1	480362	1,30	480371	2,30	480380	8,30
110	100	4"	0,1	480363	1,60	480372	2,60	480381	8,60
160	150	6"	0,1	480364	2,40	480373	3,40	480382	9,40
225	200	8"	0,1	480365	3,50	480374	4,50	480383	10,50
280	250	10"	0,1	480366	4,50	480375	5,50	480384	11,50
315	300	12"	0,1	480367	5,50	480376	6,50	480385	17,50
355	350	14"	0,1	480368	6,50	480377	7,50	480386	18,50

*mm / inch

with Lipseal 99,9 Vol.%, PPs, PE, PVDF, GRP on request



PP / EPDM or FPM Lipseal

d	diameter*			PN	pneumatic actuator double acting, 6 bar		with electric actuator	
	DN	inch	No		KG	No	KG	
63	50	2"	0,1	482181	2,10	482190	2,70	
75	65	2½"	0,1	482182	2,30	482191	2,90	
90	80	3"	0,1	482183	2,60	482192	3,20	
110	100	4"	0,1	482184	2,90	482193	3,50	
160	150	6"	0,1	482185	3,70	482194	4,30	
225	200	8"	0,1	482186	4,80	482195	5,40	
280	250	10"	0,1	482187	7,20	482196	6,90	
315	300	12"	0,1	482188	8,20	482197	8,50	
355	350	14"	0,1	482189	9,20	482198	9,50	

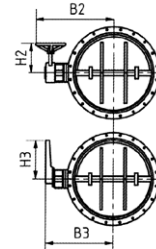
*mm / inch

with Lipseal 99,9 Vol.%, PPs, PE, PVDF, GRP on request

Butterfly Throttle Valves DN 400 - DN 2000

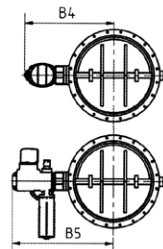


with reduction gear
with hand wheel



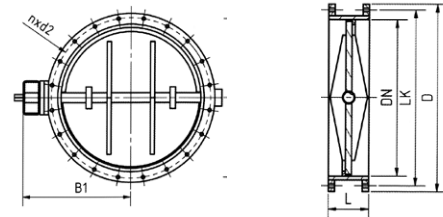
with manual lever

with pneumatic actuator
"double acting"



with electric actuator

with free shaft end

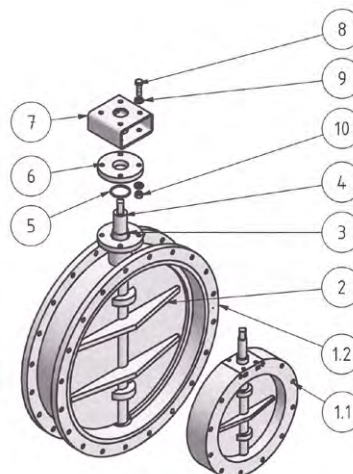


Operating pressure 0.1 bar over- or underpressure

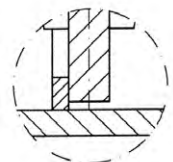
diameter*			Dimensions*										
d	DN	inch	L	B1	B2	H2	B3	H3	B4	B5	LK	D	n x d2
400	400	16"	120	370	510	135	425	300	475	645	470	500	20 x 11
450	450	18"	130	400	540	135	455	300	526	675	530	560	20 x 11
500	500	20"	130	420	560	135	475	300	546	695	570	600	24 x 11
630	600	24"	140	470	610	135	525	300	596	745	670	700	24 x 11
710	700	28"	150	520	660	135	575	300	667	795	770	800	32 x 11
800	800	32"	150	570	710	135	625	300	717	845	870	900	36 x 11
900	900	36"	160	620	760	135	675	300	767	895	970	1000	40 x 11
1000	1000	40"	170	670	835	135	725	300	817	945	1070	1100	44 x 13
1200	1200	48"	180	770	935	135	825	300	938	1045	1270	1300	48 x 13
1300	1300	52"	200	820	985	135	885	400	988	1095	1370	1400	48 x 13
1400	1400	56"	220	870	1035	135	935	400	1038	1145	1470	1500	52 x 13
1500	1500	60"	220	920	1085	135	985	400	1088	1195	1570	1600	60 x 13
1600	1600	64"	240	1000	1195	165	1065	400	1168	1291	1680	1720	60 x 13
1700	1700	68"	250	1050	1245	165	1115	400	1264	1341	1780	1820	64 x 13
1800	1800	72"	250	1130	1325	165	1195	400	1344	1421	1930	1980	64 x 13
2000	2000	80"	270	1240	1435	165	1305	400	1454	1531	2150	2200	72 x 13

*mm / inch

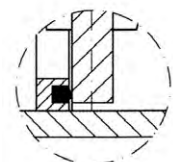
No.	description	material
1.1	body DN50-350	PVC, PP, PVDF
1.2	body DN400-2000	PVC, PP, PPs, PE, PVDF, PVC-GRP, PP-GRP
2	disc, reinforced	PVC, PP, PE, PVDF
3	pipe	PVC, PP, PE, PVDF
4	shaft	Stainless Steel 1.4301
5	O-ring	EPDM, FPM, PTFE
6	cap	PVC, PP, PVDF
7	Intermediate Plate	galvanised Stainless Steel 1.4301
8	screw	Stainless Steel 1.4301
9	washer	Stainless Steel 1.4301
10	nut	Stainless Steel 1.4571



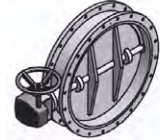
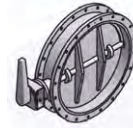
stop bar, tightness 99,5 Vol%
factory standard



lip seal gasket, tightness 99,9 Vol%
DIN 1946-4



Butterfly Throttle Valve, PP DN 400 - DN 2000



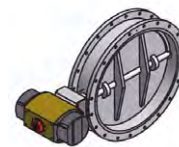
PP/ EPDM or FPM

diameter*				with free shaft end		hand lever with ratched settings		with hand-wheel and wormgear	
d	DN	inch	PN	No	KG	No	KG	No	KG
400	400	16"	0,1	480387	11,00	480400	13,00	480413	23,00
450	450	18"	0,1	480388	13,00	480401	15,00	480414	25,00
500	500	20"	0,1	480389	14,00	480402	16,00	480415	26,00
630	600	24"	0,1	480390	20,00	480403	22,00	480416	32,00
710	700	28"	0,1	480391	25,00	480404	27,00	480417	37,00
800	800	32"	0,1	480392	30,00	480405	32,00	480418	42,00
900	900	36"	0,1	480393	42,00	480406	44,00	480419	54,00
1000	1000	40"	0,1	480394	60,00	480407	62,00	480420	72,00
1200	1200	48"	0,1	480395	80,00	480408	82,00	480421	92,00
1300	1300	52"	0,1	480396	92,00	480409	94,00	480422	104,00
1400	1400	56"	0,1	480397	130,00	480410	132,00	480423	142,00
1500	1500	60"	0,1	480398	140,00	480411	142,00	480424	152,00

*mm / inch

up to DN 2000 PPs, PE, PVDF, FRP on request

PP/ EPDM or FPM



diameter*				pneumatic actuator double acting, 6 bar		with electric actuator	
d	DN	inch	PN	No	KG	No	KG
400	400	16"	0,1	482199	13,70	482211	30,00
450	450	18"	0,1	482200	17,50	482212	32,00
500	500	20"	0,1	482201	18,50	482213	33,00
630	600	24"	0,1	482202	24,50	482214	39,00
710	700	28"	0,1	482203	32,40	482215	44,00
800	800	32"	0,1	482204	37,40	482216	49,00
900	900	36"	0,1	482205	49,40	482217	61,00
1000	1000	40"	0,1	482206	67,40	482218	79,00
1200	1200	48"	0,1	482207	91,00	482219	99,00
1300	1300	52"	0,1	482208	103,00	482220	111,00
1400	1400	56"	0,1	482209	141,00	482221	149,00
1500	1500	60"	0,1	482210	151,00	482222	159,00

*mm / inch

up to DN 2000 PPs, PE, PVDF, FRP on request