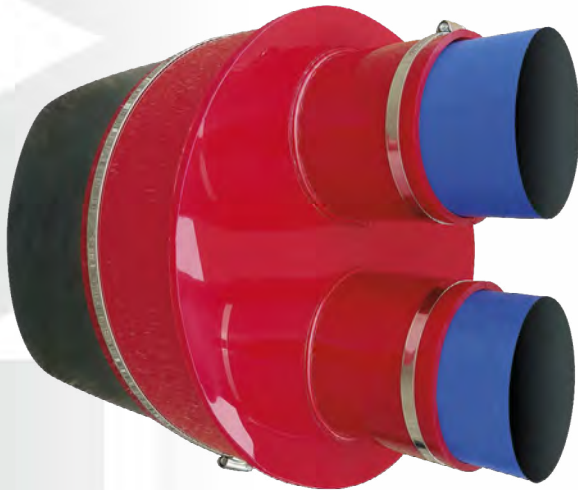
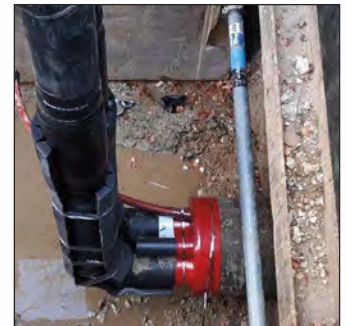


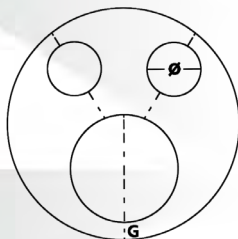
# Casing End Seal Type KASTM with one cable duct opening (CDO)



- especially for extreme eccentricities or when additional openings are required
- for new installations
- seamless from high quality red soft PVC with a thickness of 5 to 8 mm, also available with a thickness of 9 to 11 mm upon request
- with additional outlets, for example for electro protection pipes or cables
- temperature resistance approx. +55° C
- seals are individually made and are manufactured to order
- by applying a special sealing adhesive and using double tightening stainless steel bands and fasteners the seal will remain leak-tight against outside water pressure
- it is possible to weld the seal into position in special circumstances at a later time
- supplied with stainless steel bands and fasteners



## Example



- required information
- OD of casing pipe and wall thickness
  - OD of carrier pipe
  - carrier pipe position
  - skid height



Properties	Standard	Technical Data
Thickness	-	5 mm
Break at cold	DIN EN 1876-2	ca. -35°C
Working temperature min.	JEDI 35.008 / 35.010	ca. -5°C
Working temperature max.	JEDI 35.008 / 35.010	ca. +60°C
Water absorption	DIN 53472	0,1 % - 1 %
Elongation at break	ISO 527	≥ 360 %
Tensile strength	ISO 527	≥ 18 N/mm <sup>2</sup>
Tear growth resistance	DIN 53515	≥ 5 N/mm
Inflammability	DIN 53382 / DIN 4102/B2	Normally inflammable B2
Edge flaming	DIN 53382/2 / DIN 4102/B2	Self-extinguishing
Hardness Shore A	DIN 53505	77 ± 3
REACH-Conformity	-	Conform to (EG) Nr. 1272/2008 (REACH-regulation)
PAK-free	-	No polycyclic aromatic hydrocarbons are used in production
Silicone-free	-	Silicone is not part of the material and not used in the production process
RoHs	2011/65/EU the European Parliament	Raw materials meet the requirements of the Jedi-Dokument 35.012

The KONEX INTERNATIONAL guarantee for Casing End Seals KASTM is limited to failures in the material. The user is responsible for their individual application.

## Casing End Seal Type KASTM with one cable duct opening (CDO)

mm x mm	mm x mm	mm x mm	mm x mm
50 x 200	200 x 800	450 x 700	800 x 900
50 x 250	250 x 350	450 x 800	800 x 950
50 x 300	250 x 400	450 x 1000	800 x 1000
50 x 400	250 x 450	500 x 600	800 x 1100
50 x 500	250 x 500	500 x 650	800 x 1200
65 x 250	250 x 550	500 x 700	800 x 1300
65 x 300	250 x 600	500 x 750	800 x 1400
65 x 400	250 x 700	500 x 800	850 x 950
65 x 500	250 x 800	500 x 900	850 x 1000
80 x 200	250 x 900	500 x 1000	850 x 1100
80 x 250	250 x 1000	500 x 1100	900 x 1000
80 x 300	300 x 400	500 x 1200	900 x 1050
80 x 400	300 x 450	550 x 650	900 x 1100
80 x 500	300 x 500	550 x 700	900 x 1200
100 x 200	300 x 550	550 x 800	900 x 1300
100 x 250	300 x 600	550 x 900	900 x 1400
100 x 300	300 x 650	600 x 700	900 x 1500
100 x 350	300 x 700	600 x 750	950 x 1050
100 x 400	300 x 800	600 x 800	950 x 1100
100 x 500	300 x 900	600 x 850	950 x 1200
120 x 200	300 x 1000	600 x 900	950 x 1300
125 x 250	350 x 450	600 x 1000	1000 x 1100
125 x 300	350 x 500	600 x 1100	1000 x 1200
125 x 400	350 x 550	650 x 750	1000 x 1300
125 x 508	350 x 600	650 x 800	1000 x 1400
150 x 250	350 x 700	650 x 900	1000 x 1500
150 x 300	350 x 800	650 x 1000	1050 x 1200
150 x 350	350 x 900	700 x 800	1050 x 1300
150 x 400	400 x 500	700 x 850	1050 x 1400
150 x 500	400 x 550	700 x 900	1050 x 1500
150 x 600	400 x 600	700 x 1000	1100 x 1200
150 x 700	400 x 650	700 x 1100	1100 x 1300
150 x 800	400 x 700	700 x 1200	1100 x 1400
200 x 300	400 x 750	700 x 1300	1100 x 1500
200 x 350	400 x 800	700 x 1400	1200 x 1400
200 x 400	400 x 900	750 x 850	1200 x 1500
200 x 450	400 x 1000	750 x 900	1200 x 1600
200 x 500	450 x 550	750 x 950	
200 x 600	450 x 600	750 x 1000	
200 x 700	450 x 650	750 x 1200	