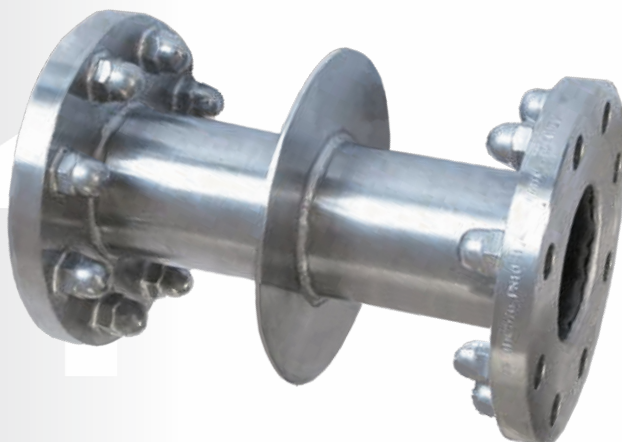


Flange to Flange Wall Sleeve

Type BOK 30-FF

hot-dip galvanised or in stainless steel



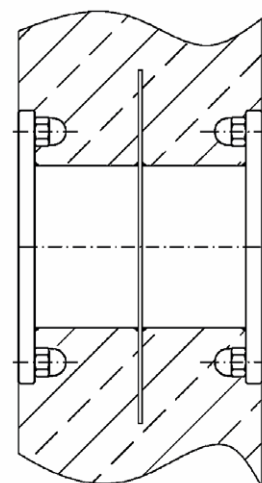
- two sided sealing Flange to Flange Wall Sleeve (FF), designed for the transmission of smooth surfaced pipes and provides a compensation for expansion to enable flush fitting to frame work
- size range from DN 50 mm to DN 1800 mm
- consisting of a longitudinally welded* pipe to EN 10217-1 / tolerances to EN ISO 1127 D1/T1
- material steel S235JR, stainless steel 1.4301, 1.4571, Duplex upon request
- surface dip-pickled and passivated, hot-dip galvanised or galvanised for potable water use, sandblasted and epoxy coated, bituminised
- contains a welded-on puddle flange in the centre which prevents water seepage along the sleeve and also serves as an anchor for the wall sleeve
- double sided flat flange connections with reduced thickness similar to DIN 2576/ EN 1092-1 Type 01 drilled to PN 10 or PN 16
- flanges with full thickness are available as well as welding neck flanges DIN 2632-35 and flanges EN 1092-1, Type 1092-11, Type 01,02,11
- flanges have cap nuts welded onto the rear face
- each wall sleeve is made to order

* welds according to DIN EN ISO 5817 C

* welding procedures in accordance with DIN EN 288-3 / DIN ISO 15614

* licenced manufacturer conforms with AD2000-buletin HPO

* Quality Assurance Certification in accordance with DIN EN ISO 3834-3



The KONEX INTERNATIONAL guarantee for BOK Wall Sleeves is limited to failures in the material. The user is responsible for their individual application.