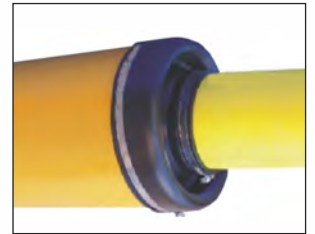


Casing End Seal

Type KADU/KAHA

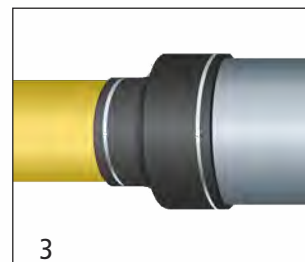
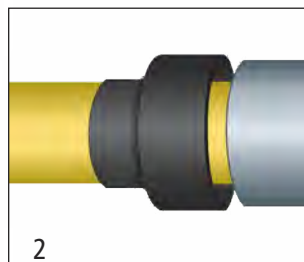
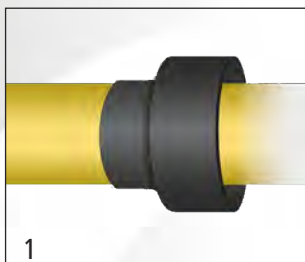


- EPDM rubber, to standard seal combinations of casing and carrier pipes from DN 25 to DN 600 mm, additional sizes available upon request
- integrated wave design allows great flexibility and an off-centre application
- expandable up to 10 %
- silicone type available upon request
- supplied with two stainless steel bands and fasteners



Application guide

1. Slide the pipe end seal over the carrier pipe before connecting the casing pipe.
2. After inserting the carrier pipe slide end seal on to the casing pipe.
3. Ensure the pipe end seal is located correctly and fasten with the stainless steel bands and fasteners



Casing End Seal Type KADU/KAHA

DN	mm x mm
25 x 40 (KAHA)	32 x 50
20 x 50	26 x 64
25 x 50	33 x 64
25 x 80	33 x 92
25 x 100	33 x 112
25 x 150	33 x 165
32 x 80	41 x 92
32 x 100	41 x 112
40 x 100	50 x 112
40 x 125	50 x 135
40 x 150	50 x 165
50 x 100	64 x 112
50 x 125	64 x 135
50 x 150	64 x 165
65 x 125	78 x 135
65 x 150	78 x 165
78 x 225	78 x 225
80 x 150	92 x 165
80 x 200	92 x 225
80 x 250	92 x 252
80 x 250	92 x 275
100 x 150	112 x 165
100 x 180	112 x 190
100 x 200	112 x 225
100 x 250	112 x 252
100 x 250	112 x 275

DN	mm x mm
100 x 300	112 x 330
125 x 200	127 x 225
125 x 250	127 x 275
150 x 200	162 x 225
150 x 250	162 x 252
150 x 250	162 x 275
150 x 300	162 x 330
180 x 250	190 x 275
180 x 300	190 x 330
200 x 250	225 x 275
200 x 300	225 x 330
200 x 350	225 x 362
200 x 400	225 x 415
250 x 300	252 x 330
250 x 350	252 x 350
250 x 400	252 x 415
250 x 300	275 x 330
250 x 350	275 x 362
250 x 400	275 x 415
300 x 400	325 x 415
300 x 450	325 x 455
300 x 500	325 x 513
400 x 500	410 x 513
400 x 600	410 x 615
500 x 600	510 x 615

Including stainless steel bands and fasteners



Type KAHA



Type KADU-V

Casing End Seal Type KADU-P

inch			OD mm			inch			OD mm		
1,5	x	3	41	x	92	8	x	16	225	x	410
1,5	x	4	41	x	112	8	x	18	225	x	462
1,75	x	3	51	x	92	8	x	20	200	x	500
1,75	x	4	51	x	112	10	x	12	260	x	330
2	x	3	64	x	92	10	x	14	250	x	356
2	x	4	60	x	110	10	x	14	280	x	360
2	x	4	64	x	112	10	x	16	280	x	410
2	x	6	60	x	160	10	x	18	273	x	457
2,5	x	6	80	x	160	10	x	20	273	x	508
3	x	5	89	x	133	10	x	22	275	x	556
3	x	6	92	x	165	12	x	16	320	x	410
3	x	8	92	x	225	12	x	18	325	x	457
3	x	10	92	x	275	12	x	20	324	x	508
3	x	12	88	x	315	12	x	22	315	x	556
4	x	5	118	x	140	14	x	18	355	x	462
4	x	6	110	x	160	14	x	20	360	x	513
4	x	8	112	x	225	14	x	22	355	x	558
4	x	10	112	x	275	16	x	20	406	x	508
4	x	12	108	x	315	16	x	22	410	x	560
5	x	8	134	x	219	16	x	24	400	x	609
5	x	10	145	x	275	18	x	22	450	x	558
5	x	12	130	x	315	18	x	24	450	x	610
6	x	8	160	x	219	20	x	24	508	x	610
6	x	10	162	x	275	20	x	26	508	x	660
6	x	12	162	x	330	20	x	28	500	x	710
6	x	14	168	x	355	22	x	26	558	x	660
6	x	16	160	x	406	22	x	32	555	x	810
8	x	10	225	x	280	24	x	28	610	x	710
8	x	12	200	x	315	24	x	30	615	x	760
8	x	14	230	x	355	24	x	32	615	x	814

Including stainless steel bands and fasteners

