

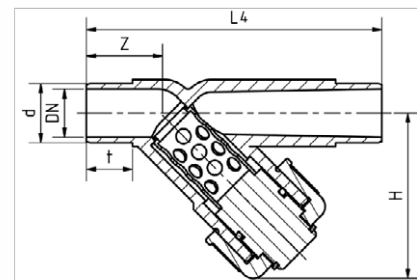
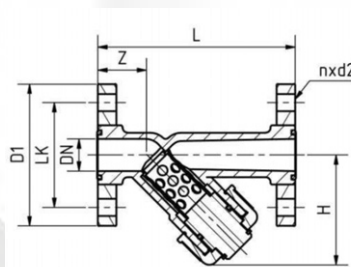
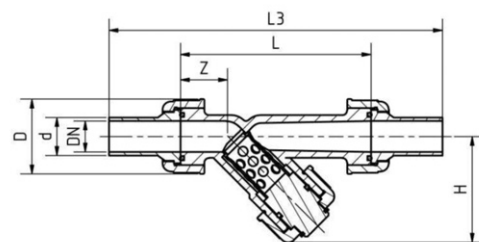
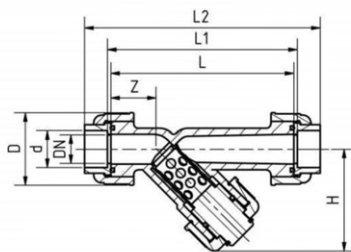
# Line Strainer

DN 15 - DN 50, PN 10



- protects valves, sensors and pumps from pollutants
- for vertical and horizontal installation
- PVC-u transparent, PVC-U grey, PP and PVDF
- EPDM, FPM O-rings
- ETFE screen with 0,5 mm mesh perforation included, 0,25 and 1,0 mm on request, 2,0 mm > 32 mm
- overall length according to EN 558
- solvent cement spigots, unions butt fusion / socket welding and loose PVC-u, GRP loose threaded flanges DIN EN 1092-1, DIN 2501
- easy dismantling for screen cleaning

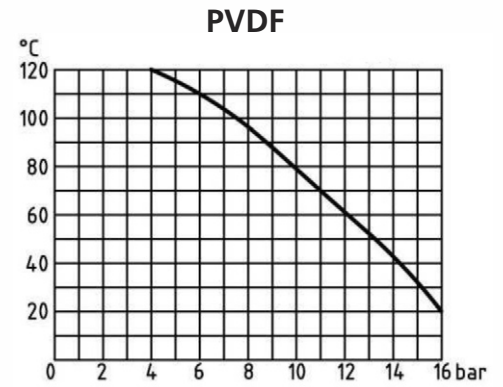
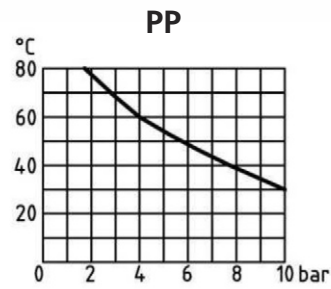
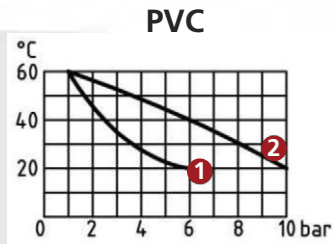
Diameter			Dimensions							KV-value p=1bar			
d	DN	inch	Z	H	L	L1	L2	L3	D	LK	D1	n x d2	l/min
20	15	1/2"	36	75	130	140	168	238	42	65	95	4 x ø 14	35
25	20	3/4"	36	80	150	160	192	264	48	75	105	4 x ø 14	65
32	25	1"	41	90	160	170	206	280	68	85	115	4 x ø 14	90
40	32	1 1/4"	45	110	180	190	230	306	85	100	140	4 x ø 18	155
50	40	1 1/4"	51	128	200	210	256	332	85	110	150	4 x ø 18	225
63	50	2"	60	150	230	240	294	368	102	125	165	4 x ø 18	370



# Line Strainer

## DN 15 - DN 50, PN 10

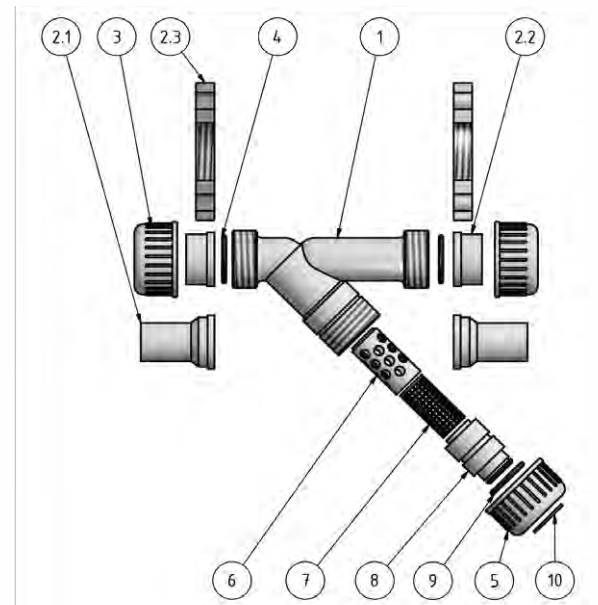
### Pressure/temperature diagram



- ① dangerous media
- ② harmless media

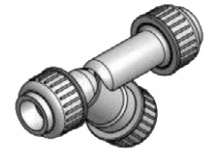
### Spare Parts

No.	description	material
1	body	PVC, PP, PVDF
2.1	union, butt welding	PP, PVDF
2.2	union end, socket weld	PVC, PP, PVDF
2.3	flange	PVC / GRP
3	connection nut	PVC, PP, PVDF
4	O-ring	EPDM, FKM
5	connection nut	PVC, PP, PVDF
6	screen cage	PVC, PP, PVDF
7	screen, 0,5 mm mesh	ETFE
8	screen support	PVC, PP, PVDF
9	O-ring	EPDM, FKM
10	spring-lock washer	PVC



## Line Strainer DN 15 - DN 50

PVC transparent  
EPDM



d	DN	inch	PN	solvent cement male		loose PVC-u flange, PN10 DIN 2501 / EN1092		union ends socket cementing	
				No	KG	No	KG	No	KG
20	15	½"	10	482885	0,19	479477	0,34	479507	0,25
25	20	¾"	10	482886	0,21	479478	0,42	479508	0,30
32	25	1"	10	482887	0,29	479479	0,58	479509	0,40
40	32	1¼"	10	482888	0,48	479480	0,96	479510	0,68
50	40	1½"	10	482889	0,07	479481	1,30	479511	0,98
63	50	2"	10	482890	1,26	479482	1,90	479512	1,60

PVC transparent  
FKM

d	DN	inch	PN	solvent cement male		loose PVC-u flange, PN10 DIN 2501 / EN1092		union ends socket cementing	
				No	KG	No	KG	No	KG
20	15	½"	10	482891	0,19	479483	0,34	479513	0,25
25	20	¾"	10	482892	0,21	479484	0,42	479514	0,30
32	25	1"	10	482893	0,29	479485	0,58	479515	0,40
40	32	1¼"	10	482894	0,48	479486	0,96	479516	0,68
50	40	1½"	10	482895	0,70	479487	1,30	479517	0,98
63	50	2"	10	482896	1,26	479488	1,90	479518	1,60

## Line Strainer DN 15 - DN 50

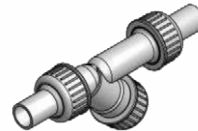
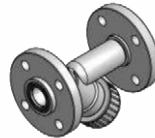


### PVC grey, EPDM

d	DN	inch	PN	solvent cement male		loose PVC-u flange, PN 10 DIN 2501 / EN 1092-1		union ends socket welding	
				No	KG	No	KG	No	KG
20	15	½"	10	472715	0,19	472595	0,34	472709	0,25
25	20	¾"	10	472716	0,21	472596	0,42	472710	0,30
32	25	1"	10	472717	0,29	472597	0,58	472711	0,40
40	32	1¼"	10	472718	0,48	472598	0,96	472712	0,68
50	40	1½"	10	472719	0,70	472599	1,30	472713	0,98
63	50	2"	10	472720	1,26	472600	1,90	472714	1,60

### PVC grey, FKM

d	DN	inch	PN	solvent cement male		loose PVC-u flange, PN 10 DIN 2501 / EN 1092-1		union ends socket welding	
				No	KG	No	KG	No	KG
20	15	½"	10	472721	0,19	454816	0,34	454822	0,25
25	20	¾"	10	472722	0,21	454817	0,42	454823	0,30
32	25	1"	10	472723	0,29	454818	0,58	454824	0,40
40	32	1¼"	10	472724	0,48	454819	0,96	454825	0,68
50	40	1½"	10	472725	0,70	454820	1,30	454826	0,98
63	50	2"	10	472726	1,26	454821	1,90	454827	1,60



### PP, EPDM

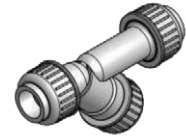
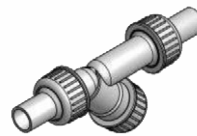
d	DN	inch	PN	loose GRP flange DIN 2501 / EN 1092-1 PN10		union ends butt welding		union ends socket welding	
				No	KG	No	KG	No	KG
20	15	½"	10	454798	0,30	454804	0,13	472521	0,12
25	20	¾"	10	454799	0,37	454805	0,17	472522	0,16
32	25	1"	10	454800	0,50	454806	0,24	472523	0,22
40	32	1¼"	10	454801	0,83	454807	0,40	472524	0,36
50	40	1½"	10	454802	1,10	454808	0,60	472525	0,51
63	50	2"	10	454803	1,50	454809	0,95	472526	0,85

### PP, FKM

d	DN	inch	PN	loose GRP flange DIN 2501 / EN 1092-1 PN10		union ends butt welding		union ends socket welding	
				No	KG	No	KG	No	KG
20	15	½"	10	472347	0,30	472329	0,13	472790	0,12
25	20	¾"	10	472348	0,37	472330	0,17	472791	0,16
32	25	1"	10	472349	0,50	472331	0,24	472792	0,22
40	32	1¼"	10	472350	0,83	472332	0,40	472793	0,36
50	40	1½"	10	472351	1,10	472333	0,60	472794	0,51
63	50	2"	10	472352	1,50	472334	0,95	472795	0,85

# Line Strainer

## DN 15 - DN 50



### PVDF, EPDM

d	DN	inch	PN	loose GRP flange DIN 2501 / EN 1092-1 PN10		union ends butt welding		union ends socket welding	
				No	KG	No	KG	No	KG
20	15	½"	16	479941	0,40	479947	0,25	479953	0,24
25	20	¾"	16	479942	0,50	479948	0,33	479954	0,31
32	25	1"	16	479943	0,68	479949	0,45	479955	0,42
40	32	1¼"	16	479944	1,15	479950	0,74	479956	0,68
50	40	1½"	16	479945	1,51	479951	1,10	479957	0,94
63	50	2"	10	479946	2,20	479952	1,65	479958	1,55

### PVDF, FKM

d	DN	inch	PN	loose GRP flange DIN 2501 / EN 1092-1 PN10		union ends butt welding		union ends socket welding	
				No	KG	No	KG	No	KG
20	15	½"	10	472341	0,40	472335	0,25	472807	0,24
25	20	¾"	10	472342	0,50	472336	0,33	472808	0,31
32	25	1"	10	472343	0,68	472337	0,45	472809	0,42
40	32	1¼"	10	472344	1,15	472338	0,74	472810	0,68
50	40	1½"	10	472345	1,51	472339	1,10	472811	0,94
63	50	2"	10	472346	2,2	472340	1,65	472812	1,55